

Reinforcing News



StelCrete continues to introduce new products by working with industry leaders in innovation—CANADACAR by Newton Parking Structures Ltd.

StelCrete has been working with Newton Parking Structures Ltd. over the past couple of years in research and development to produce precast concrete floor panels for the first modular parking structure in North America. The CANADACAR System can be erected as a free-standing structure, or be directly attached, or abutted to an existing building. Sites with differing elevations are often accommodated by split-level and half-storey ramp designs. The new structure to be completed this year is located at the Centennial Metrolinx/Centennial GO Station in Markham Ontario.

The basic grid of the CANADACAR System consists of an 18m module. The length of a single parking space is often between 5.50m and 6.00m with a clearance height between 2.10m to 2.20m. The floor-to-floor clearance is therefore 2.70m to 2.80m. The egress way is

also generally designed to be between 6.00m and 7.00m wide. The actual parking space may vary from 2.50m to 2.70m in width as chosen. All of these module dimensions are dependent on the needs of the client that can be easily accommodated with the CANADACAR system.

High performance concrete (HPC) is used to pre-fabricate the precast elements. The mix-design and advanced processes used produce a high quality and durable precast which surpasses the CSA S413 Standard and exceeds the conventional requirements of 40 years. The CANADACAR precast deck system has been certified by TROW Carruthers and Wallace, which has concluded that the system, with no waterproofing membrane other than at the joint areas, "is equivalent to or better" in respect to CSA-S413-2007.

Each HPC precast panel is

9.00m long and joined together to produce the typical 18.00m module. The HPC precast panel is 105mm thick which is half the conventional thickness of any other precast system with superior compressive strength exceeding 70MPa in 28 days. These combined characteristics meet or exceed the performance and objectives of programs such as LEED (Leadership in Energy and Environmental Design) with substantial savings in materials, energy and costs.



Panels stored for shipping.

StelCrete has developed an inventory consignment program with Newton to supply rebar mats from its Welland facility.

Inside this issue:

StelCrete and HawkeyPedershaab join forces	2
StelCrete's Web site rebuilt	2
Pre-assembled reinforcement used on Toronto towers	3
StelCrete scores high on Workwell audit	3
StelCrete re-establishes a facility in Fort Erie	4
Introducing Salit Tube & Steel	4

Reinforcing News

CANADACAR cont'd

The mats are shipped to Newton's Guelph facility and stored inside. The mats are placed in one of five molds that are transported into position by cranes and track to receive the high performance concrete mix, then covered for curing.

Newton's plant was designed for 21C manufacturing, considering the notion of sustainable products and safe work spaces in a controlled environment. Even the facility's process water is cleaned before it is discharged into the municipal sanitary sewer. Because the panels are modular and produced in a controlled environment, use on construction projects is not weather-dependent, and only a small construction team is required. See www.kiwi-newton.com for details about the Newton Group, its products, and projects.

StelCrete and HawkeyePedershaab join forces

Hawkeye of Canada, Ltd. has announced that StelCrete has joined its team as the company's new distribution center for reinforcement spacers in Eastern Canada from Saskatchewan to the Maritimes.

Over the years, Hawkeye has developed a full family of reinforcement spacers and accessories for virtually every concrete shape and product, including round, arch, oval, manholes, box sections, catch basins, septic tanks, and other precast or cast-in-place products.

Every spacer has been designed and tested to perform dependably, quickly, and easily to cut labor costs, boost productivity, and improve product quality. Nowhere will you find a more innovative and complete line of spacers for basic or tough spacing applications.

To provide the best delivery and service, spacers are now stocked at StelCrete's Fort Erie, Ontario operation.

Hawkeye has been an innovator of spacers for the last 40 years. The company's newest innovation is the Ergonomic TangleFree™ Spacer System which has been very well accepted by the concrete industry. The TangleFree System saves time and money. Hawkeye of Canada is offering a TangleFree start up promotion which includes a free TangleFree Cart.

To find out more, place an order, or request samples, call one of our Spacer Specialists at 800-626-1451 or email chriss@hawkeye-pipe.com.



Patent applied for

TangleFree™ Cart

WebLink

<http://www.hawkeye-pipe.com/publications/101.swf>

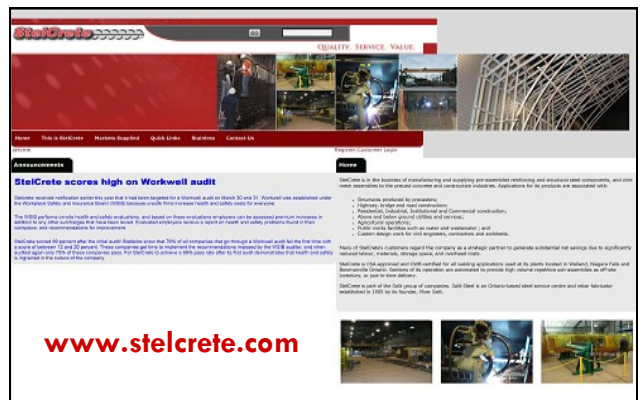
StelCrete Web site rebuilt to accommodate 21C communications and business practices

StelCrete has launched its new Web site mentioned in the Summer 2009 issue of Reinforcing News.

Management understood that there had to be better ways of using its Web site and the Internet to communicate information about products and services. It also realized that the Web site could be used to introduce new ways of doing business with StelCrete that are more cost effective in terms of time and resources.

The new site continues to evolve, as innovative features are rolled out through 2010.

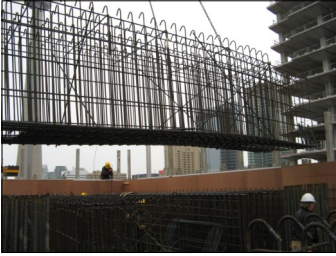
Programmers are working on the functionality of the clients only site, where clients will have an option of checking their inventory of pre-assembled products, expand orders, and inform key StelCrete personnel of new orders and expected inventories, based on project bids of contractors.



The security and ease of use of this service will be fully tested before launch.



Pre-assembled reinforcement used on Toronto residential towers



WebLinks

<http://www.mapleleafsquare.com>
<http://stelcrete.com.web17.winsvr.net/LinkClick.aspx?fileticket=-cAWWyAVqZc%3d&tabid=109>

Maple Leaf Square in Toronto consists of 1.8 million square feet of living, working and playing space covering 2.1 acres. The project has 8,500 tonnes of rebar embedded in 2.7 million cubic feet of concrete held in place by 3.7 million square feet of formwork. Two towers rise 600 feet, or 65 stories above an excavation 50 feet below Lake Ontario that yielded 10.2 million cubic feet of earth.

Salit Steel supplied the rebar along with specially designed pre-assembled beams and columns for poured-in-place concrete components of the towers.

The beams and columns were pre-assembled inside StelCrete's Welland facility in a controlled environment with no weather restrictions. The assemblies were all tied, not welded according to the Reinforcing Steel

Institute of Ontario Manual of Standard Practice (tying of reinforcing steel).

The concrete pour schedule was very aggressive and the project had fallen behind. The only way to speed up construction was to pre-assemble the columns and beams offsite and deliver on the same day they were ordered.

There was no room on site to allow for pre-assembly of beams or columns. Onsite rebar tying was undertaken by SRI Installations.

The project includes:

- 872 condominiums
- A 169-room sports and entertainment themed LeGermain Boutique Hotel
- 230,000-square feet of LEED certified office space, and 10,000-square feet of retail space

- A 24,000-square foot hi-tech world class sports bar and a fine-dining establishment
- A 1,700-square foot hi-definition theatre
- A sports retail store
- A 7,000-sq. ft. day-care centre, and
- A public plaza to accommodate 5000 people.

The west side of Air Canada Centre was rebuilt to widen the inside concourse and connect to Maple Leaf Square.

PLC Constructors Inc. was the construction manager for the project. Jablonsky Associates and Partners was the structural engineer and the Atlas Corporation the site work contractor.

StelCrete scores high on Workwell audit

StelCrete received notification earlier this year that its Welland facility had been targeted for a Workwell audit on March 30 and 31. Workwell was established under the Workplace Safety and Insurance Board (WSIB) because unsafe firms increase health and safety costs for everyone.

The WSIB performs on-site health and safety evaluations, and based on these evaluations employers can be assessed premium increases in addition to any other surcharges that have

been levied. Evaluated employers receive a report on health and safety problems found in their workplace, and recommendations for improvement.

StelCrete scored 99 percent after the initial audit! Statistics show that 76% of all companies that go through a Workwell audit fail the first time with a score of between 12 and 20 percent.

These companies get time to implement the recommendations imposed by the

WSIB auditor, and when audited again only 75% of these companies pass.

For StelCrete to achieve a 99% pass rate after its first audit demonstrates that health and safety is ingrained in the culture of the company.

WebLink

<http://www.wsib.on.ca/wsib/wsibsite.nsf/public/Workwell>

**StelCrete
scored 99%
after the initial
audit
demonstrating
that health and
safety is a
corporate
culture norm.**



Reinforcing News

StelCrete Industries Limited
90 Centre Street
P.O. Box 96
Welland, Ontario L3B 5P2 Canada

T: 905.735.9993
Toll Free: 866.924.0837
F: 905.735.3955
Production and Shipping
F: 905.735.8440

stelcrete.com
Quality...Service...Value

Reinforcing News is published by StelCrete Industries Limited. It is distributed via Internet technology.

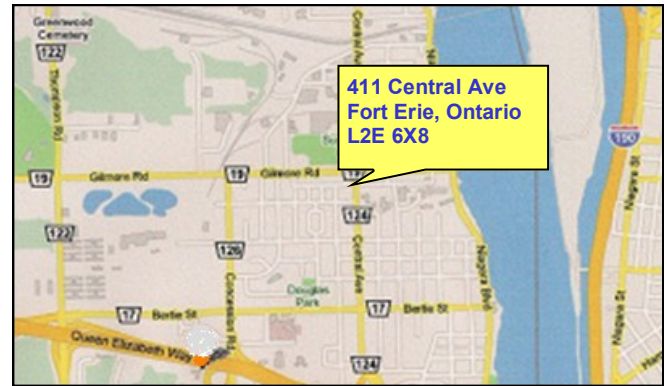
Information is believed to be correct at time of publication.

StelCrete Industries Limited shall not be liable for any error or omission. It is published and distributed periodically, and is intended to provide general information.

StelCrete re-establishes operations in Fort Erie

After a three-year hiatus, StelCrete has re-established its presence in Fort Erie by expanding into its former facility. Recent expansion of StelCrete's services has placed a demand for more space on the company.

StelCrete's plant was re-opened to accommodate increased business activity, and the need for a distribution centre for Hawkeye of Canada Ltd. Fort Erie is the distribution center for Hawkeye's reinforcement



spacers in Eastern Canada from Saskatchewan to the Maritimes.

StelCrete is CSA-approved and CWB-certified for all

welding applications used at its plants in Welland, Bowmanville, and Fort Erie, Ontario, Canada.

Salit Tube & Steel Inc. strengthens Salit's position



Left to right : George Christopoulos (Driver), Deb Pyne (Office Administrator), Glenn Hill (General Manager), Jim Greene (Sales), Justin McGragh (Production)

Salit Steel is pleased to introduce its newest division, Salit Tube & Steel Inc. The new division is a stocking distributor of mechanical tube and cold rolled products servicing Ontario.

Mechanical tubing, also known as Electric Resistance Welded (ERW) is a light gauge, shaped and welded tube that is found

in many everyday items, such as furniture components, store fixtures and exercise equipment. It is also used in commercial applications including light structural steel for greenhouses and areas where a high strength to weight ratio is important. Roller conveyors and many automotive parts require high strength to weight ratios.

Located in Mississauga, Salit Tube & Steel Inc. is staffed by Glenn Hill, General Manager, Jim Greene, Sales and Deb Pyne, Office Administrator. George Christopoulos is the company's driver and Justin McGragh is responsible for production.