

Reinforcing News

New product development—StelCrete and Salit Rebar Sales

StelCrete and the Rebar Sales Centre of Salit Steel have joined forces to introduce a well established product to heavy construction general contractors. StelCrete has taken its success with pre-assembled mats and cages for the precast concrete industry, and expanded service to contractors specialized in poured-in-place concrete. This was made possible through Salit's Rebar Sales Centre in Grimsby. Contractors now receive a value added product that adds to the profitability of projects and the safety of job sites.

Look for Salit's ad in the Fall/Winter edition of The Generals, official publication of the Ontario General Contractors Association.

Pre-assembled reinforcement giving you a head start on project profits

Using precision made, pre-assembled rebar configurations, just-in-time logistics and veteran placing crews, SALIT STEEL helps create poured-in-place heavy construction project profits, right on site.

Our continuous engineering and service innovations translate directly into a safer, more efficient, cost effective and faster build for you and your customers.

See more proof of project profit advantages at www.salitsteel.com

- vertical & horizontal components
- multiple sizes and configurations
- quality control ensured
- building code compliant
- priority processing and service



84 Main Street East
Grimsby, Ontario L3M 1N7
Telephone (905) 309-2388
Telephone (905) 309-2388
Toll-Free 1-866-434-0867
Fax : (905) 309-4344
khangars@salitsteel.com
www.salitsteel.com



StelCrete introduces a Tiger to its Fort Erie Facility

StelCrete placed a Tiger on the floor of its Fort Erie facility in the summer of 2010 to produce draw wire. The machine was operational by October.



Tiger creates drawn wire on site.

The drawing process consists of taking hot rolled wire of varying sizes and drawing it through a series of dies which reduces the diameter of the wire and significantly increases the tensile strength. This process is conducted without external heat sources and therefore the finished product is known as cold drawn wire.

There are two types of finished wire produced. One is designated as W for smooth finish and the other D for deformed finish. The D finish is achieved by using dies that put deformations in the finished wire which increases its adherence to concrete.

There are many applications for cold drawn wire in precast, but the primary applications are twofold. One is coil form for use on cage making machines that produce the reinforcement cages for reinforced concrete pipe, and the second (which requires further processing) is for use in the manufacture of mesh. StelCrete's Tiger allows the company to draw up to W/D 10 in finished diameter.

The product produced conforms to all applicable ASTM and CSA standards

...continued on page 2

Inside this issue:

StelCrete increasing product availability and inventory	2
Largest CON/SPAN pre-assembly delivered to Con Cast Pipe	3
Pre-assemblies used for Ontario Hydro's tower caissons	3
StelCrete staff rode to conquer cancer	4
Spotlight on Bob Hansen	4

Reinforcing News

Tiger from page 1 for use in reinforced concrete.

StelCrete's innovative processes allow for full traceability of material used, and independent testing resulting in complete transpar-

ency and worry-free products for clients.

Stelcrete invested in this product line in response to clients' needs and a desire for more options and flexibility from Stelcrete. It is a good fit in Stelcrete's product offering and en-

hances the company's goal to continually add value to its products and services.

The Tiger is fully automated and can be operated by one person. It is produced by REX machinery and Steel LLC of Charlevoix, MI.



StelCrete increases product availability with new equipment and increasing inventory of standard pre-assemblies

Pre-assemblies for precast and poured-in-place slabs have always been core products at StelCrete. Now, the company has the capability to supply pre-assemblies for slabs in sections, opening the opportunities for supplying pre-assembled reinforcement for slabs of any size.

More recently, StelCrete began supplying reinforcement using the carpet roll method for building floors and slabs. The company has the equipment to provide the service more quickly on a wider range of applications.

StelCrete carries the full

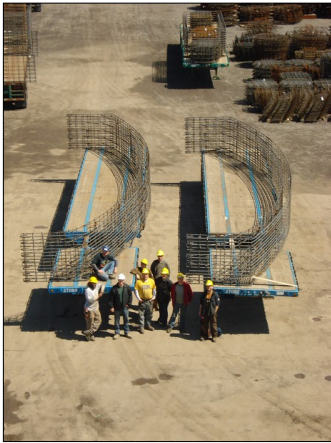


range of assemblies for standard Ontario Provincial Standards (OPS) product such as maintenance hole components and barrier components, as well as products specific to each of the company's customers' designs and needs. Standard OPS mesh boxes and certain sizes of cold drawn

wire are carried in inventory. In some cases, where space permits, StelCrete has consignment inventories at customer locations. This allows for instant access to product without the cost of carrying it. See www.stelcrete.com for project and product sheets.



Largest CON/SPAN® pre-assembly delivered to Con Cast Pipe



StelCrete staff dwarfed by the size of the 48-foot long pre-assembly.

StelCrete has supplied Con Cast Pipe with the pre-assembled reinforcement for the largest CON/SPAN unit delivered to a jobsite in Canada. Twenty-eight 14.63 metre (48 foot) long precast units are to be delivered to Neighbourhood 702 in the Springdale Community of Brampton. The units are required for construction of a small precast bridge over a major drainage channel along the west side of the development. Each unit weighed 36 Tonnes.

StelCrete assembled the reinforcing cages, and



Pre-assembled rebar reinforcement for SUPER/SPAN precast mould

shipped them to the Con Cast Pipe plant south of Guelph for just-in-time delivery. After each unit was precast, they were stored for just-in-time delivery and assembly.

Each unit will be shipped on an escorted 53-foot long trailer. The “legs” of each unit are cabled until set in place. The contractor (Con Drain) is able to assemble 10 to 15 units per day.

Pre-assemblies used for Ontario Hydro’s hydro tower caissons

StelCrete is supplying the pre-assembled reinforcement for tower caissons on a 180km transmission line



Pre-assembled cages for caissons stockpiled for timely delivery

A 180km, double-circuit, 500 kV transmission line is being built on a widened existing corridor between the Bruce Power facility in Kincardine and Hydro One’s switching station in Milton. The project represents the largest expansion to Ontario’s transmission system in 20 years. Bruce Power is returning two nuclear units to service over

the next few years. About 700 MW of wind development projects have been identified in the Bruce area to date, with another 1000 MW of future renewable energy potential.

StelCrete pre-assembled the reinforcing for the poured-in-place concrete tower bases, stockpiled the cages, and delivered them to the site

following the contractor’s installation schedule.



Pre-assembled cages used for poured-in-place construction of tower caisson bases





Reinforcing News

StelCrete Industries Limited
90 Centre Street
P.O. Box 96
Welland, Ontario L3B 5P2 Canada

T: 905.735.9993
Toll Free: 866.924.0837
F: 905.735.3955
Production and Shipping
F: 905.735.8440

stelcrete.com
Quality...Service...Value
www.stelcrete.com

Reinforcing News is published by StelCrete Industries Limited. It is distributed via Internet technology.

Information is believed to be correct at time of publication.

StelCrete Industries Limited shall not be liable for any error or omission. It is published and distributed periodically, and is intended to provide general information.

StelCrete staff rode to conquer cancer with Steve's CyclePath's



Steve Cohen, President of Salit Steel, the parent company of StelCrete, rallied staff in Salit's family of companies (and friends) to take action to help researchers conquer cancer. Steve's cycling team participated in a two-day (June 11 and 12) major cycling event called *The Enbridge Ride to Conquer Cancer* benefiting The Princess Margaret Hospital, one of the top 5 cancer research hospitals in the world.

Over 180 riders participated in the 2011 Princess Margaret Ride to Conquer Cancer. Steve's CyclePath's collectively raised over \$550,000 and have raised over \$1.7 million over the past

four years.

StelCrete fielded its own team, some who rode for sisters, brothers and parents afflicted by the disease.



Spotlight on Bob Hansen

Bob Hansen is StelCrete's Technical Sales and Engineering Manager. In 2008, Bob joined StelCrete as Operations Manager, after 15 years in the steel manufacturing industry. He started work as a welder when he was 15. He paid for his studies in computer sciences at Brock University and civil engineering at

McMaster University by working as a welder/fitter.

After university, he was employed with John Deere, Toyota, and Etmeco. At Etmeco, he worked in sales and management before joining StelCrete. Bob can be reached by telephone at 905-735-9993 x 4 or bhansen@stelcrete.com.



Bob Hansen, Manager Sales and Engineering